

COMPASAL

COMPASAL



**POWERFUL
DRIVING FORCE**





Taking "basing itself on the present and looking to the world" as the company's market philosophy, Haohua Tyre works closely with each dealer to ensure that every dealer can get the most opportunity in its market in the most suitable way.

In the future, the company will continue to strive to become the most advanced and cost-effective tyre production and distribution platform in the world. With high-quality products, competitive prices and efficient services, we have the ability to become your best tyre supplier and business partner.

As a world-renowned tyre manufacturer, Haohua Tyre has always been committed to manufacturing tyre products with high quality and higher cost performance. In the past 20 years, Haohua Tyre has made remarkable achievements. With advanced technology research and development, and production equipment, we developed and produced various suitable tread patterns according to customer needs. At present, our company has developed into a global leader in tyre with high quality and higher cost performance, and one of the largest private tyre manufacturers in China.



PCR



BLAZER HP



BLAZER UHP II



GRANDECO



SMACHER



BLAZER UHP

ALL SEASON



CROSSTOP 4S

SUV



CITIWALKER

4X4



VERSANT A/T



GRINDOR R/T



VERSANT M/T



VERSANT M/T II

COMMERCIAL



Commax I



Commax II



VANMAX

WINTER



WinterBlazer HP



WinterBlazer UHP



WinterBlazer VAN



IceMaster

COMPASAL

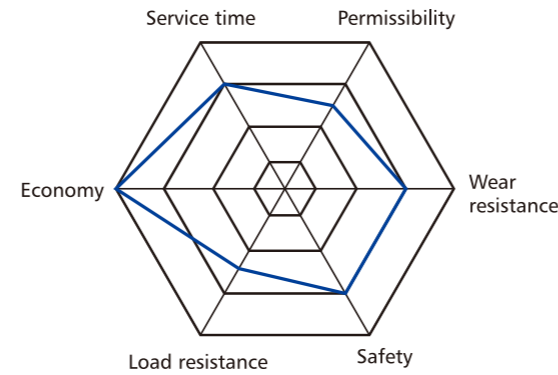
TYRE FAMILY



UTQG:360 AA—380 AA

BLAZER HP

M+S



Comfortable silent performance
Adopt 5 frequency pattern block, virtual analysis and optimized permutation design, effectively reduce the pattern block noise resonance phenomenon, reduce product noise, improve driving comfort.

Excellent wetland performance
Optimization of longitudinal/transverse groove design and the use of the best groove curve, improve the drainage performance of tires in wetlands and greatly improve the safety performance of tires.

Extraordinary handling performance
The internal and external asymmetrical shoulder design is adopted to ensure wet performance while improving tire handling performance, bringing driving pleasure.

Excellent wear resistance
The optimum sea-land ratio and optimized steel sheet design can prevent the stress concentration when the tire is running, so that all points of the tire are uniformly worn, and the wear performance is improved.



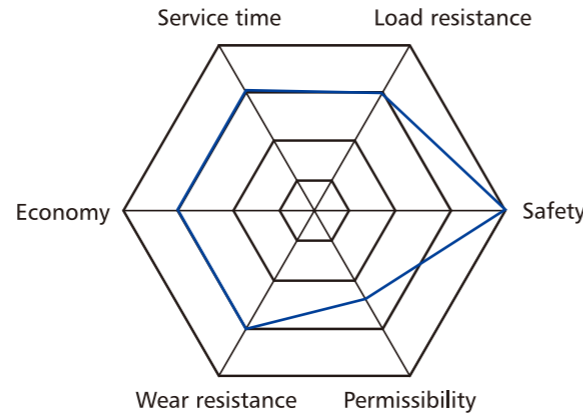
PCR

Size	PR	Loading Index	Speed Rating	Tread Depth	Inflatable Section Width(mm)	Standard Rim	Overall Diameter (mm)	UTQG	MAX Load Kg	MAX Load lbs	MAX Pressure Kpa	MAX Pressure Psi	Sidewall Description
145/70R12	-	69	T	6.7	150	4.5	509	360 AA	325	716	300	44	BSW
155/70R12	-	73	T	6.7	157	4.5	523	360 AA	365	805	300	44	BSW
165/70R12	-	77	T	6.7	170	5	537	360 AA	412	908	300	44	BSW
175/70R12	-	80	T	6.7	177	5	551	360 AA	450	992	300	44	BSW
145/70R13	-	71	T	6.7	150	4.5	534	360 AA	345	761	300	44	BSW
145/80R13	-	75	T	6.7	145	4	562	360 AA	387	853	300	44	BSW
155/65R13	-	73	T	6.7	157	4.5	532	360 AA	365	805	300	44	BSW
155/70R13	-	75	T	6.7	157	4.5	548	360 AA	387	853	300	44	BSW
155/80R13	-	79	T	6.7	157	4.5	578	360 AA	437	963	300	44	BSW
165/65R13	-	77	T	6.7	170	5	544	360 AA	412	908	300	44	BSW
165/70R13	-	79	T	6.7	170	5	562	360 AA	437	963	300	44	BSW
165/80R13	-	83	T	6.7	165	4.5	594	360 AA	487	1074	300	44	BSW
175/60R13	-	77	H	6.7	177	5	540	360 AA	412	908	300	44	BSW
175/65R13	-	80	T	6.7	177	5	558	360 AA	450	992	300	44	BSW
175/70R13	-	82	T	6.7	177	5	576	360 AA	475	1047	300	44	BSW
185/70R13	-	86	T	6.7	189	5.5	590	360 AA	530	1168	300	44	BSW
155/65R14	-	75	H	6.7	157	4.5	558	360 AA	387	853	300	44	BSW
165/60R14	-	75	H	6.7	170	5	554	360 AA	387	853	300	44	BSW
165/65R14	-	79	H	6.7	170	5	570	360 AA	437	963	300	44	BSW
165/65R14	-	79	T	6.7	170	5	570	360 AA	437	963	300	44	BSW
165/70R14	-	81	H	6.7	170	5	588	360 AA	462	1019	300	44	BSW
165/70R14	-	81	T	6.7	170	5	588	360 AA	462	1019	300	44	BSW
165/70R14 XL	-	85	T	6.7	170	5	588	360 AA	515	1135	340	50	BSW
175/65R14	-	82	H	6.7	177	5	584	360 AA	475	1047	300	44	BSW
175/65R14	-	82	T	6.7	177	5	584	360 AA	475	1047	300	44	BSW
175/65R14 XL	-	86	T	6.7	177	5	584	360 AA	530	1168	340	50	BSW
175/70R14	-	84	H	6.7	177	5	602	360 AA	500	1102	300	44	BSW
175/70R14	-	84	T	6.7	177	5	602	360 AA	500	1102	300	44	BSW
175/70R14 XL	-	88	T	6.7	177	5	602	360 AA	560	1235	340	50	BSW
185/50R14	-	77	V	7	194	6	542	380 AA	412	908	300	44	BSW
185/55R14	-	80	H	7	194	6	560	380 AA	450	992	300	44	BSW
185/60R14	-	82	H	6.7	189	5.5	578	360 AA	475	1047	300	44	BSW
185/65R14	-	86	H	6.7	189	5.5	596	360 AA	530	1168	300	44	BSW
185/70R14	-	88	H	6.7	189	5.5	616	360 AA	560	1235	300	44	BSW
195/60R14	-	86	H	7	201	6	590	380 AA	530	1168	300	44	BSW
195/65R14	-	89	H	7	201	6	610	380 AA	580	1279	300	44	BSW
195/70R14	-	91	H	7	201	6	630	380 AA	615	1356	300	44	BSW
205/60R14	-	88	H	7.3	209	6	602	380 AA	560	1235	300	44	BSW
205/70R14	-	95	H	7	209	6	644	380 AA	690	1521	300	44	BSW
215/70R14	-	96	H	7	221	6.5	658	380 AA	710	1565	300	44	BSW
145/65R15	-	72	T	6.7	150	4.5	569	360 AA	355	783	300	44	BSW
155/60R15	-	74	T	6.7	157	4.5	567	360 AA	375	827	300	44	BSW
165/60R15	-	77	H	6.7	170	5	579	360 AA	412	908	300	44	BSW
165/65R15	-	81	H	6.7	170	5	595	360 AA	462	1019	300	44	BSW
175/50R15	-	75	H	6.7	182	5.5	557	360 AA	387	853	300	44	BSW
175/55R15	-	77	H	6.7	182	5.5	573	360 AA	412	908	300	44	BSW
175/60R15	-	81	H	6.7	177	5	591	360 AA	462	1019	300	44	BSW
175/65R15	-	84	H	6.7	177	5	609	360 AA	500	1102	300	44	BSW
185/45R15	-	75	V	7	183	6	547	380 AA	387	853	300	44	BSW
185/55R15	-	82	V	7	194	6	585	380 AA	475	1047	300	44	BSW
185/60R15	-	84	H	6.7	189	5.5	603	360 AA	500	1102	300	44	BSW
185/60R15 XL	-	88	H	6.7	189	5.5	603	360 AA	560	1235	340	50	BSW
185/65R15	-	88	H	6.7	189	5.5	621	360 AA	560	1235	300	44	BSW
185/65R15 XL	-	92	T	6.7	189	5.5	621	360 AA	630	1389	340	50	BSW
195/45R15 XL	-	82	V	7	195	6.5	557	380 AA	475	1047	340	50	BSW
195/50R15	-	82	V	7	201	6	577	380 AA	475	1047	300	44	BSW
195/55R15	-	85	V	7	201	6	595	380 AA	515	1135	300	44	BSW
195/60R15	-	88	H	7	201	6	615	380 AA	560	1235	300	44	BSW
195/60R15	-	88	V	7	201	6	615	380 AA	560	1235	300	44	BSW
195/65R15	-	91	H	7	201	6	635	380 AA	615	1356	300	44	BSW
195/65R15	-	91	V	7	201	6	635	380 AA	615	1356	300	44	BSW
195/65R15 XL	-	95	H	7	201	6	635	380 AA	690	1521	340	50	BSW
205/55R15	-	88	V	7.3	214	6.5	607	380 AA	560	1235	300	44	BSW
205/60R15	-	91	V	7.3	209	6	627	380 AA	615	1356	300	44	BSW
205/65R15	-	94	H	7.3	209	6	647	380 AA	670	1477	300	44	BSW
205/65R15	-	94	V	7.3	209	6	647	380 AA	670	1477	300	44	BSW
205/70R15	-	96	H	7	209	6	669	380 AA	710	1565	300	44	BSW
215/65R15	-	96	H	7.3	221	6.5	661	380 AA	710	1565	300	44	BSW
215/70R15	-	98	H	7	221	6.5	683	380 AA	750	1653	300	44	BSW
225/70R15	-	100	H	7	228	6.5	697	380 AA	800	1764	300	44	BSW
175/50R16	-	77	V	6.7	182	5.5	582	360 AA	412	908	300	44	BSW
185/50R16	-	81	V	7	194	6	592	380 AA	462	1019	300	44	BSW
185/55R16 XL	-	87	V	7	194	6	610	380 AA	545	1201	340	50	BSW
185/60R16	-	86	H	6.7	189	5.5	628	360 AA	530	1168	300	44	BSW
195/45R16 XL	-	84	V	7	195	6.5	582	380 AA	500	1102	340	50	BSW
195/50R16 XL	-	88	V	7	201	6	602	380 AA	560	1235	340	50	BSW
195/55R16	-	87	V	7	201	6	620	380 AA	545	1201	300	44	BSW
195/55R16 XL	-	91	V	7	201	6	620	380 AA	615	1356	340	50	BSW
195/60R16	-	89	H	7	201	6	640	380 AA	580	1279	300	44	BSW
205/55R16	-	91	V	7.3	214	6.5	632	380 AA	615	1356	300	44	BSW
205/55ZR16 XL	-	94	W	7.3	214	6.5	632	380 AA	670	1477	340	50	BSW
205/60R16	-	92	V	7.3	209	6	652	380 AA	630	1389	300	44	BSW
205/60R16 XL	-	96	H	7.3	209	6	652	380 AA	710	1565	340	50	BSW
205/65R16	-	95	H	7.3	209	6	672	380 AA	690	1521	300	44	BSW
215/45ZR16 XL	-	90	W	7	213	7	600	380 AA	600	1323	340	50	BSW
215/55ZR16 XL	-	97	W	7.3	226	7	642	380 AA	730	1609	340	50	BSW
215/60R16	-	95	V	7.3	221	6.5	664	380 AA	690	1521	300	44	BSW
215/60R16 XL	-	99	H	7.3	221	6.5	664	380 AA	775	1709	340	50	BSW
215/65R16	-	98	H	7.3	221	6.5	686	380 AA	750	1653	300	44	BSW
225/60R16	-	98	H	7.3	228	6.5	676	380 AA	750	1653	300	44	BSW
235/60R16	-	100	H	7.3	240	7	688	380 AA	800	1764	300	44	BSW



BLAZER UHP II

M+S



UTQG:280/AA/A



The meteoric steel design brings the swift sensation of speed and allows the driver to enjoy the instantaneous speed.



The asymmetrical shoulder design with soft inside and rigid outside ensures wet performance while improving tire handling performance and bringing driving pleasure.



The innovative sound storage cabin can effectively warm up the noise generated when driving, and the sound waves will disappear into the air.



Optimal groove ratio(5 grooves&4 grooves), improve the handling ability while ensuring the braking and safety performance of the tire on slippery roads.



COMFORT



OIL



ECONOMY



PCR

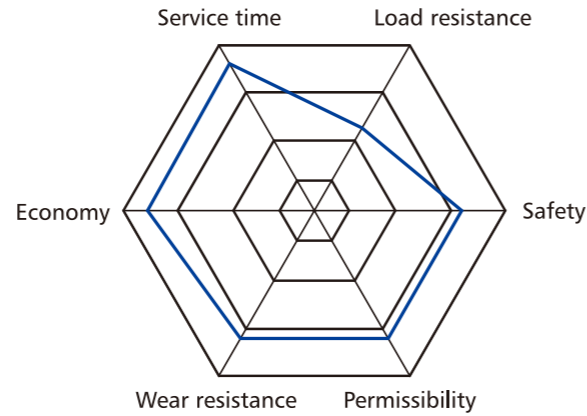
Size	PR	Loading Index	Speed Rating	Tread Depth	Inflatable Section Width (mm)	Standard Rim	Overall Diameter (mm)	UTQG	MAX Load Kg	MAX Load lbs	MAX Pressure Kpa	MAX Pressure Psi	Sidewall Description
195/40R17 XL	-	81	W	7.2	200	7J	588	280/AA/A	462	1019	340	50	BSW
195/45R17 XL	-	85	W	7.2	195	6 1/2J	608	280/AA/A	515	1135	340	50	BSW
205/40ZR17 XL	-	84	W	7.2	212	7 1/2J	596	280/AA/A	500	1102	340	50	BSW
205/45ZR17 XL	-	88	W	7.2	206	7J	616	280/AA/A	560	1235	340	50	BSW
205/50ZR17 XL	-	93	W	7.2	214	6 1/2J	638	280/AA/A	650	1433	340	50	BSW
205/55ZR17 XL	-	95	W	7.2	214	6 1/2J	658	280/AA/A	690	1521	340	50	BSW
215/40ZR17 XL	-	87	W	7.2	218	7 1/2J	604	280/AA/A	545	1201	340	50	BSW
215/45ZR17 XL	-	91	W	7.2	213	7J	626	280/AA/A	615	1356	340	50	BSW
215/45ZR17 XL	-	91	Y	7.2	213	7J	626	280/AA/A	615	1356	340	50	BSW
215/50ZR17 XL	-	95	W	7.2	226	7J	648	280/AA/A	690	1521	340	50	BSW
215/50ZR17 XL	-	95	Y	7.2	226	7J	648	280/AA/A	690	1521	340	50	BSW
215/55ZR17 XL	-	98	W	7.2	226	7J	668	280/AA/A	750	1653	340	50	BSW
225/45ZR17 XL	-	94	W	7.2	225	7 1/2J	634	280/AA/A	670	1477	340	50	BSW
225/45ZR17 XL	-	94	Y	7.2	225	7 1/2J	634	280/AA/A	670	1477	340	50	BSW
225/50ZR17 XL	-	98	W	7.2	233	7J	658	280/AA/A	750	1653	340	50	BSW
225/50ZR17 XL	-	98	Y	7.2	233	7J	658	280/AA/A	750	1653	340	50	BSW
225/55R17 XL	-	101	W	7.2	233	7J	680	280/AA/A	825	1819	340	50	BSW
235/45ZR17 XL	-	97	W	7.2	236	8J	644	280/AA/A	730	1609	340	50	BSW
235/45ZR17 XL	-	97	Y	7.2	236	8J	644	280/AA/A	730	1609	340	50	BSW
235/55ZR17 XL	-	103	W	7.2	245	7 1/2J	690	280/AA/A	875	1929	340	50	BSW
215/35ZR18 XL	-	84	W	7.2	218	7 1/2J	607	280/AA/A	500	1102	340	50	BSW
215/40ZR18 XL	-	89	W	7.2	218	7 1/2J	629	280/AA/A	580	1279	340	50	BSW
215/45ZR18 XL	-	93	Y	7.2	213	7J	651	280/AA/A	650	1433	340	50	BSW
215/50ZR18 XL	-	92	W	7.2	226	7J	673	280/AA/A	630	1389	300	44	BSW
215/55R18 XL	-	99	W	7.2	226	7J	693	280/AA/A	775	1709	340	50	BSW
225/35ZR18 XL	-	87	Y	7.2	230	8J	615	280/AA/A	545	1201	340	50	BSW
225/40ZR18 XL	-	92	W	7.2	230	8J	637	280/AA/A	630	1389	340	50	BSW
225/40ZR18 XL	-	92	Y	7.2	230	8J	637	280/AA/A	630	1389	340	50	BSW
225/45ZR18 XL	-	95	W	7.2	225	7 1/2J	659	280/AA/A	690	1521	340	50	BSW
225/45ZR18 XL	-	95	Y	7.2	225	7 1/2J	659	280/AA/A	690	1521	340	50	BSW
225/50ZR18 XL	-	99	W	7.2	233	7J	683	280/AA/A	775	1709	340	50	BSW
225/55ZR18 XL	-	102	W	7.2	233	7J	705	280/AA/A	850	1874	340	50	BSW
235/40ZR18 XL	-	95	Y	7.2	241	8 1/2J	645	280/AA/A	690	1521	340	50	BSW
235/45ZR18 XL	-	98	W	7.2	236	8J	669	280/AA/A	750	1653	340	50	BSW
235/45ZR18 XL	-	98	Y	7.2	236	8J	669	280/AA/A	750	1653	340	50	BSW
235/50ZR18 XL	-	101	W	7.2	245	7 1/2J	693	280/AA/A	825	1819	340	50	BSW
235/50ZR18 XL	-	101	Y	7.2	245	7 1/2J	693	280/AA/A	825	1819	340	50	BSW
235/55ZR18 XL	-	104	W	7.2	245	7 1/2J	715	280/AA/A	900	1984	340	50	BSW
245/35ZR18 XL	-	92	Y	7.2	248	8 1/2J	629	280/AA/A	630	1389	340	50	BSW
245/40ZR18 XL	-	97	Y	7.2	248	8 1/2J	653	280/AA/A	730	1609	340	50	BSW
245/45ZR18 XL	-	100	Y	7.2	243	8J	677	280/AA/A	800	1764	340	50	BSW
255/35ZR18 XL	-	94	Y	7.2	260	9J	635	280/AA/A	670	1477	340	50	BSW
255/55ZR18 XL	-	109	Y	7.5	265	8J	737	280/AA/A	1030	2271	340	50	BSW
265/35ZR18 XL	-	97	Y	7.2	271	9 1/2J	643	280/AA/A	730	1609	340	50	BSW
225/35ZR19 XL	-	88	Y	7.2	230	8J	641	280/AA/A	560	1235	340	50	BSW
225/40ZR19 XL	-	93	Y	7.2	230	8J	663	280/AA/A	650	1433	340	50	BSW
225/45ZR19 XL	-	96	Y	7.2	225	7 1/2J	685	280/AA/A	710	1565	340	50	BSW
225/55ZR19 XL	-	103	W	7.2	233	7J	731	280/AA/A	875	1929	340	50	BSW
235/35ZR19 XL	-	91	Y	7.2	241	8 1/2J	647	280/AA/A	615	1356	340	50	BSW
235/40ZR19 XL	-	96	Y	7.2	241	8 1/2J	671	280/AA/A	710	1565	340	50	BSW
235/45ZR19 XL	-	99	W	7.2	236	8J	695	280/AA/A	775	1709	340	50	BSW
235/50ZR19 XL	-	103	Y	7.2	245	7 1/2J	719	280/AA/A	875	1929	340	50	BSW
235/55ZR19 XL	-	105	W	7.2	245	7 1/2J	741	280/AA/A	925	2039	340	50	BSW
235/55ZR19 XL	-	105	Y	7.2	245	7 1/2J	741	280/AA/A	925	2039	340	50	BSW
245/35ZR19 XL	-	93	Y	7.2	248	8 1/2J	655	280/AA/A	650	1433	340	50	BSW
245/40ZR19 XL	-	98	Y	7.2	248	8 1/2J	679	280/AA/A	750	1653	340	50	BSW
245/45ZR19 XL	-	102	Y	7.2	243	8J	703	280/AA/A	850	1874	340	50	BSW
245/55ZR19 XL	-	107	W	7.5	253	7 1/2J	753	280/AA/A	975	2149	340	50	BSW
255/30ZR19 XL	-	91	Y	7.2	260	9J	637	280/AA/A	615	1356	340	50	BSW
255/35ZR19 XL	-	96	Y	7.2	260	9J	661	280/AA/A	710	1565	340	50	BSW
255/40ZR19 XL	-	100	Y	7.2	260	9J	687	280/AA/A	800	1764	340	50	BSW
255/55ZR19 XL	-	111	W	7.5	265	8J	763	280/AA/A	1090	2403	340	50	BSW
265/30ZR19 XL	-	93	Y	7.2	271	9 1/2J	643	280/AA/A	650	1433	340	50	BSW
265/50ZR19 XL	-	110	W	7.5	277	8 1/2J	749	280/AA/A	1060	2337	340	50	BSW
275/30ZR19 XL	-	96	Y	7.2	278	9 1/2J	649	280/AA/A	710	1565	340	50	BSW
275/35ZR19 XL	-	100	Y	7.2	278	9 1/2J	675	280/AA/A	800	1764	340	50	BSW
275/40ZR19 XL	-	105	Y	7.2	278	9 1/2J	703	280/AA/A	925	2039	340	50	BSW
275/45ZR19 XL	-	108	W	7.2	273	9J	731	280/AA/A	1000	2205	340	50	BSW
275/55ZR19 XL	-	111	W	7.5	284	8 1/2J	785	280/AA/A	1090	2403	300	44	BSW
285/45ZR19 XL	-	111	Y	7.2	285	9 1/2J	739	280/AA/A	1090	2403	340	50	BSW
195/55R20 XL	-	95	H	7.2	201	6J	722	280/AA/A	690	1521	340	50	BSW
235/30ZR20 XL	-	88	Y	7.2	241	8 1/2J	650	280/AA/A	560	1235	340	50	BSW
235/45ZR20 XL	-	100	W	7.2	236	8J	720	280/AA/A	800	1764	340	50	BSW
245/40ZR20 XL	-	99	W	7.2	248	8 1/2J	704	280/AA/A	775	1709	340	50	BSW
245/50ZR20 XL	-	105	Y	7.5	253	7 1/2J	754	280/AA/A	925	2039	340	50	BSW
255/30ZR20 XL	-	92	Y	7.2	260	9J	662	280/AA/A	630	1389	340	50	BSW
265/50ZR20 XL	-	111	W	7.5	277	8 1/2J	774	280/AA/A	1090	2403	340	50	BSW
275/30ZR20 XL	-	97	Y	7.2	278	9 1/2J	674	280/AA/A	730	1609	340	50	BSW
275/35ZR20 XL	-	103	W	7.2	278	9 1/2J	700	280/AA/A	875	1929	340	50	BSW
275/35ZR20 XL	-	102	Y	7.2	278	9 1/2J	700	280/AA/A	850	1874	340	50	BSW
275/50ZR20 XL	-	113	W	7.5	284	8 1/2J	784	280/AA/A	1150	2535	340	50	BSW
295/40ZR20 XL	-	110	Y	7.2	301	10 1/2J	744	280/AA/A	1060	2337	340	50	BSW
315/35ZR20 XL	-	110	Y	7.2	320	11J	728	280/AA/A	1060	2337	340	50	BSW
245/35ZR21 XL	-	96	Y	7.2	248	8 1/2J	705	280/AA/A	710	1565	340	50	BSW
275/30ZR21 XL	-	98	Y	7.2	278	9 1/2J	699	280/AA/A	750	1653	340	50	BSW
275/40ZR21 XL	-	107	Y	7.2	278	9 1/2J	753	280/AA/A	975	2149	340	50	BSW
275/45ZR21 XL	-	110	Y	7.2	273	9J	781	280/AA/A	1060	2337	340	50	BSW
315/35ZR21 XL	-	111	Y	7.2	320	11J	753	280/AA/A	1090	2403	340	50	BSW
315/40ZR21 XL	-	115	Y	7.2	320	11J	785	280/AA/A	1215	2679	340	50	BSW

GRANDECO

M+S



UTQG:300 AA—500 AA



Provide optimized tread handing,wet skid resistance.

Holding strong,directional precision,handing,braking drive good.

To achieve a quiet and comfortable ride.

High-speed,slippery,rolling resistanc,noise,the best performance combination.



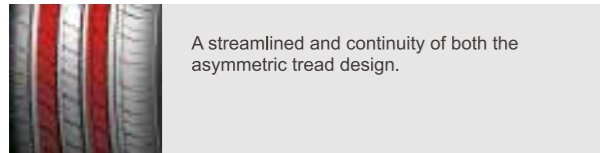
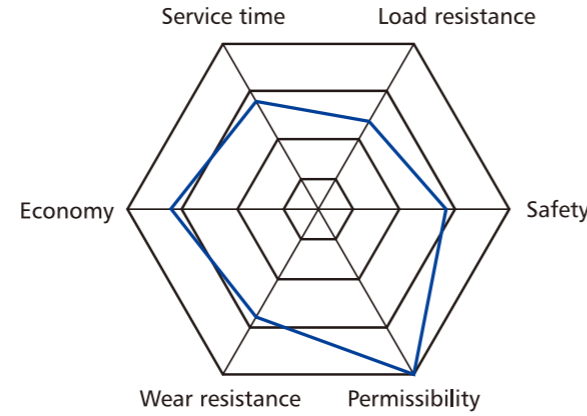
PCR

Size	PR	Loading Index	Speed Rating	Tread Depth	Inflatable Section Width (mm)	Standard Rim	Overall Diameter (mm)	UTQG	MAX Load Kg	MAX Load lbs	MAX Pressure Kpa	MAX Pressure Psi	Sidewall Description
145/70R12	-	69	T	7.1	150	4.50B	509	420 AA	325	716	300	44	BSW
155/70R12	-	73	T	7.1	157	4.50B	523	420 AA	365	805	300	44	BSW
165/70R12	-	77	T	6.9	170	5.00B	537	420 AA	412	908	300	44	BSW
155/65R13	-	73	T	7.1	157	4.50B	532	420 AA	365	805	300	44	BSW
155/70R13	-	75	T	7.5	157	4.50B	548	420 AA	387	853	300	44	BSW
165/65R13	-	77	T	7.1	170	5.00B	544	420 AA	412	908	300	44	BSW
165/70R13	-	79	T	6.9	170	5.00B	562	420 AA	437	963	300	44	BSW
175/70R13	-	82	T	7.1	177	5.00B	576	420 AA	475	1047	300	44	BSW
165/70R14	-	81	H	6.9	170	5J	588	420 AA	462	1019	300	44	BSW
175/60R14	-	79	H	7.0	177	5J	566	420 AA	437	963	300	44	BSW
175/65R14	-	82	H	7.1	177	5J	584	420 AA	475	1047	300	44	BSW
175/70R14	-	84	H	7.1	177	5J	602	420 AA	500	1102	300	44	BSW
185/60R14	-	82	H	7.3	189	5 1/2J	578	420 AA	475	1047	300	44	BSW
185/65R14	-	86	H	7.3	189	5 1/2J	596	420 AA	530	1168	300	44	BSW
185/70R14	-	88	H	7.3	189	5 1/2J	616	420 AA	560	1235	300	44	BSW
195/70R14	-	91	H	7.3	201	6 J	630	500 AA	615	1356	300	44	BSW
195/60R14	-	86	H	7.5	201	6 J	590	500 AA	530	1168	300	44	BSW
205/70R14	-	95	H	7.8	209	6 J	644	500 AA	690	1521	300	44	BSW
195/65R15	-	91	H	7.3	201	6J	635	500 AA	615	1356	300	44	BSW
195/60R15	-	88	H	7.5	201	6 J	615	500 AA	560	1235	300	44	BSW
175/65R15	-	84	H	7.1	177	5J	609	500 AA	500	1102	300	44	BSW
185/55R15	-	82	V	7.5	194	6 J	585	500 AA	475	1047	300	44	BSW
185/60R15	-	84	H	7.3	189	5 1/2J	603	500 AA	500	1102	300	44	BSW
185/65R15	-	88	H	7.3	189	5 1/2J	621	500 AA	560	1235	300	44	BSW
195/65R15	-	91	H	7.3	201	6J	635	480 AA	615	1356	300	44	BSW
195/65R15	-	91	V	7.3	201	6 J	635	500 AA	615	1356	300	44	BSW
205/60R15	-	91	V	7.8	209	6 J	627	500 AA	615	1356	300	44	BSW
205/65R15	-	94	H	7.6	209	6 J	647	500 AA	670	1477	300	44	BSW
205/70R15	-	96	H	7.8	209	6 J	669	500 AA	710	1565	300	44	BSW
215/60R15	-	94	H	7.8	221	6 1/2J	639	500 AA	670	1477	300	44	BSW
215/65R15	-	96	H	8.0	221	6 1/2J	661	500 AA	710	1565	300	44	BSW
215/70R15	-	98	H	7.8	221	6 1/2J	683	500 AA	750	1653	300	44	BSW
225/70R15	-	100	H	7.8	228	6 1/2J	697	500 AA	800	1764	300	44	BSW
195/60R16	-	89	H	7.3	201	6 J	640	500 AA	580	1279	300	44	BSW
205/55R16	-	91	V	7.5	214	6 1/2J	632	500 AA	615	1356	300	44	BSW
205/60R16	-	92	V	7.8	209	6 J	652	500 AA	630	1389	300	44	BSW
215/55R16 XL	-	97	W	7.4	226	7J	642	300 AA	730	1609	340	50	BSW
215/60R16	-	95	V	7.9	221	6 1/2J	664	500 AA	690	1521	300	44	BSW
215/65R16	-	98	H	8.0	221	6 1/2J	686	500 AA	750	1653	300	44	BSW
215/70R16	-	100	H	7.8	221	6 1/2J	708	500 AA	800	1764	300	44	BSW
225/60R16	-	98	H	7.9	228	6 1/2J	676	500 AA	750	1653	300	44	BSW
235/60R16	-	100	H	8.0	240	7J	688	500 AA	800	1764	300	44	BSW
215/45R17 XL	-	91	W	7.8	213	7J	626	300 AA	615	1356	340	50	BSW
215/50R17 XL	-	95	W	7.8	226	7J	648	300 AA	690	1521	340	50	BSW
215/55R17 XL	-	98	W	7.8	226	7J	668	300 AA	750	1653	340	50	BSW
225/45R17 XL	-	94	W	7.8	225	7 1/2J	634	300 AA	670	1477	340	50	BSW
215/55R18 XL	-	99	V	7.8	226	7J	693	300 AA	775	1709	340	50	BSW
225/55R19 XL	-	103	V	7.8	233	7J	731	300 AA	875	1929	340	50	BSW

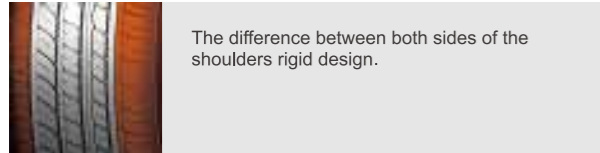


UTQG:300 AA—420 AA

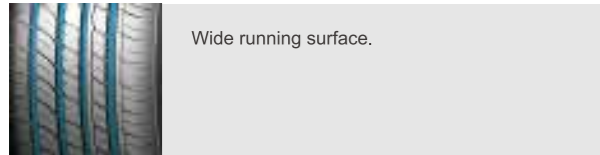
SMACHER M+S



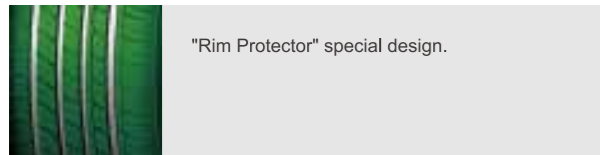
A streamlined and continuity of both the asymmetric tread design.



The difference between both sides of the shoulders rigid design.



Wide running surface.



"Rim Protector" special design.



STABILITY ECONOMY SILENCE WET



PCR

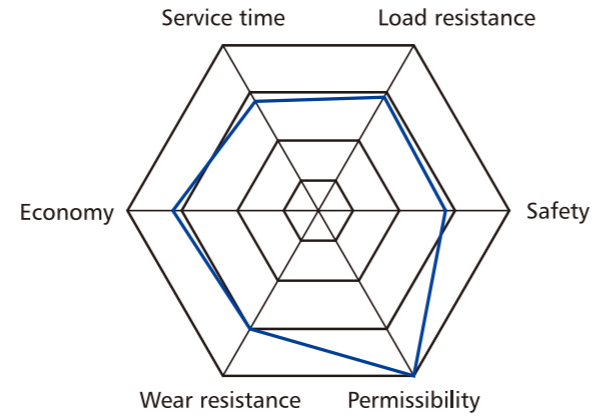
Size	PR	Loading Index	Speed Rating	Tread Depth	Inflatable Section Width (mm)	Standard Rim	Overall Diameter (mm)	UTQG	MAX Load Kg	MAX Load lbs	MAX Pressure Kpa	MAX Pressure Psi	Sidewall Description
195/50R15	-	82	V	7.8	201	6J	577	300 AA	475	1047	300	44	BSW
195/55R15	-	85	V	7.8	201	6J	595	300 AA	515	1135	300	44	BSW
185/55R16 XL	-	87	V	7.0	194	6 J	610	300 AA	515	1135	300	50	BSW
195/45R16 XL	-	84	V	7.0	195	6 1/2J	582	300 AA	500	1102	340	50	BSW
195/50R16 XL	-	88	V	7.0	201	6J	602	300 AA	560	1235	340	50	BSW
195/55R16 XL	-	91	V	7.8	201	6J	620	300 AA	615	1356	340	50	BSW
205/45ZR16 XL	-	87	W	7.0	206	7J	590	300 AA	545	1201	340	50	BSW
205/50ZR16 XL	-	91	W	7.8	214	6 1/2J	612	300 AA	615	1356	340	50	BSW
205/55ZR16 XL	-	94	W	7.8	214	6 1/2J	632	300 AA	670	1477	340	50	BSW
215/55ZR16 XL	-	97	W	7.8	226	7J	642	300 AA	730	1609	340	50	BSW
225/50ZR16 XL	-	96	W	7.0	233	7J	632	300 AA	710	1565	340	50	BSW
225/55ZR16 XL	-	99	W	7.8	223	7J	654	300 AA	775	1709	340	50	BSW
205/40ZR17 XL	-	84	W	7.8	212	7 1/2J	596	300 AA	500	1102	340	50	BSW
205/45ZR17 XL	-	88	W	7.0	206	7J	616	300 AA	560	1235	340	50	BSW
205/50ZR17 XL	-	93	W	7.8	214	6 1/2J	638	300 AA	650	1433	340	50	BSW
205/55ZR17 XL	-	95	W	7.0	214	6 1/2J	658	300 AA	690	1521	340	50	BSW
215/45ZR17 XL	-	91	W	7.8	214	7J	628	300 AA	615	1356	340	50	BSW
215/50ZR17 XL	-	95	W	7.8	226	7J	648	300 AA	690	1521	340	50	BSW
215/55ZR17 XL	-	98	W	7.8	226	7J	668	300 AA	750	1653	340	50	BSW
225/45ZR17 XL	-	94	W	7.8	225	7 1/2J	634	300 AA	670	1477	340	50	BSW
225/50ZR17 XL	-	98	W	7.8	233	7J	658	300 AA	750	1653	340	50	BSW
225/55ZR17 XL	-	101	W	7.8	223	7J	680	300 AA	825	1819	340	50	BSW
235/45ZR17 XL	-	97	W	7.8	236	8J	644	300 AA	730	1609	340	50	BSW
235/55ZR17 XL	-	103	W	7.0	245	7 1/2J	690	300 AA	875	1929	340	50	BSW
235/50ZR17 XL	-	100	W	7.0	245	7 1/2J	668	300 AA	800	1764	340	50	BSW
245/40ZR17 XL	-	95	W	7.0	248	8 1/2J	628	300 AA	690	1521	340	50	BSW
245/45ZR17 XL	-	99	W	7.0	243	8J	652	300 AA	775	1709	340	50	BSW
215/35ZR18 XL	-	84	W	7.8	218	7 1/2J	607	300 AA	500	1102	340	50	BSW
215/45ZR18 XL	-	93	W	7.0	213	7J	651	300 AA	650	1433	340	50	BSW
225/40ZR18 XL	-	92	W	7.8	230	8J	637	300 AA	630	1389	340	50	BSW
225/45ZR18 XL	-	95	W	7.8	225	7 1/2J	659	300 AA	690	1521	340	50	BSW
235/40ZR18 XL	-	95	W	7.8	241	8 1/2J	645	300 AA	690	1521	340	50	BSW
235/45ZR18 XL	-	98	W	7.0	236	8J	669	300 AA	750	1653	340	50	BSW
235/50ZR18 XL	-	101	W	7.0	245	7 1/2J	693	300 AA	825	1819	340	50	BSW
245/40ZR18 XL	-	97	W	7.0	248	8 1/2J	653	300 AA	730	1609	340	50	BSW
245/45ZR18 XL	-	100	W	7.0	243	8J	677	300 AA	800	1764	340	50	BSW
255/35ZR18 XL	-	94	W	7.0	260	9J	635	300 AA	670	1477	340	50	BSW
255/40ZR18 XL	-	99	W	7.0	260	9J	661	300 AA	775	1709	340	50	BSW
255/45ZR18 XL	-	103	W	7.0	255	8 1/2J	687	300 AA	875	1929	340	50	BSW
225/35ZR19 XL	-	88	W	7.0	230	8J	641	300 AA	560	1235	340	50	BSW
235/35ZR19 XL	-	91	W	7.0	241	8 1/2J	647	300 AA	615	1356	340	50	BSW
245/35ZR19 XL	-	93	W	7.8	248	8 1/2J	655	300 AA	650	1433	340	50	BSW
245/40ZR19 XL	-	98	W	7.0	248	8 1/2J	679	300 AA	750	1653	340	50	BSW
245/45ZR19 XL	-	102	W	7.0	243	8J	703	300 AA	850	1874	340	50	BSW
255/35ZR19 XL	-	96	W	7.0	260	9J	661	300 AA	710	1565	340	50	BSW
225/35ZR20 XL	-	90	W	7.8	230	8J	666	300 AA	600	1323	340	50	BSW
225/35ZR20 XL	-	93	W	7.8	230	8J	666	300 AA	650	1433	340	50	BSW
245/30ZR20 XL	-	90	W	7.0	248	8 1/2J	656	300 AA	600	1323	340	50	BSW
245/30ZR20 XL	-	97	W	7.0	248	8 1/2J	656	300 AA	730	1609	340	50	BSW
245/35ZR20 XL	-	95	W	7.0	248	8 1/2J	680	300 AA	690	1521	340	50	BSW
245/45ZR20 XL	-	103	W	7.0	243	8J	728	300 AA	875	1929	340	50	BSW
255/35ZR20 XL	-	97	W	7.0	260	9J	686	300 AA	730	1609	340	50	BSW
255/35ZR20 XL	-	102	W	7.0	260	9J	686	300 AA	850	1874	340	50	BSW
255/45ZR20 XL	-	105	W	7.0	255	8 1/2J	738	300 AA	925	2039	340	50	BSW
275/40R20 XL	-	106	V	7.8	278	9 1/2J	728	300 AA	950	2094	340	50	BSW
275/45R20 XL	-	110	V	7.8	273	9J	756	300 AA	1060	2337	340	50	BSW
305/35R20 XL	-	107	V	7.8	313	11J	722	300 AA	975	2149	340	50	BSW
315/35R20 XL	-	110	V	7.8	320	11J	728	300 AA	1060	2337	340	50	BSW
295/35ZR21 XL	-	107	W	7.8	301	10 1/2J	739	300 AA	975	2149	340	50	BSW
295/40ZR21 XL	-	111	W	7.8	301	10 1/2J	769	300 AA	1090	2403	340	50	BSW
245/30ZR22 XL	-	92	W	7.0	248	8 1/2J	707	300 AA	630	1389	340	50	BSW
255/30ZR22 XL	-	95	W	7.0	260	9J	713	300 AA	690	1521	340	50	BSW
265/35R22 XL	-	102	V	7.8	271	9 1/2J	745	300 AA	850	1874	340	50	BSW
285/35R22 XL	-	106	V	7.8	290	10J	759	300 AA	950	2094	340	50	BSW
305/40R22 XL	-	114	V	7.8	313	11J	803	300 AA	1180	2601	340	50	BSW
305/45R22 XL	-	118	V	7.8	303	10J	833	300 AA	1320	2910	340	50	BSW
255/30ZR24 XL	-	97	W	7.0	260	9J	764	300 AA	730	1609	340	50	BSW
275/25ZR24 XL	-	96	W	7.8	283	10J	748	300 AA	710	1565	340	50	BSW
295/35R24 XL	-	110	V	7.8	301	10 1/2J	816	300 AA	1060	2337	340	50	BSW
305/35R24 XL	-	112	V	7.8	313	11J	824	300 AA	1120	2469	340	50	BSW

The Labeling Information Is Subject To Change Without Notice.



BLAZER UHP

M+S



UTQG:300 AA

- The intermediate continuous ribs.
- The asymmetrical tread design.
- Simple continuous pattern crown.
- "Rim Protector" special design.

- COMFORT
- OIL
- ECONOMY



PCR

Size	PR	Loading Index	Speed Rating	Tread Depth	Inflatable Section Width (mm)	Standard Rim	Overall Diameter (mm)	UTQG	MAX Load Kg	MAX Load lbs	MAX Pressure Kpa	MAX Pressure Psi	Sidewall Description
195/45R15 XL	-	82	V	7	195	6 1/2J	557	300 AA	475	1047	340	50	BSW
225/60R17	-	99	V	7.8	228	6 1/2J	702	300 AA	775	1709	300	44	BSW
215/40ZR18 XL	-	89	W	7	218	7 1/2J	629	300 AA	580	1279	340	50	BSW
245/50ZR18 XL	-	104	W	7	253	7 1/2J	703	300 AA	900	1984	340	50	BSW
285/45R19 XL	-	111	V	7.8	285	9 1/2J	739	300 AA	1090	2403	340	50	BSW
275/35ZR20 XL	-	102	W	7.8	278	9 1/2J	700	300 AA	850	1874	340	50	BSW

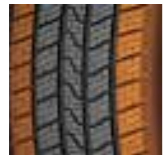
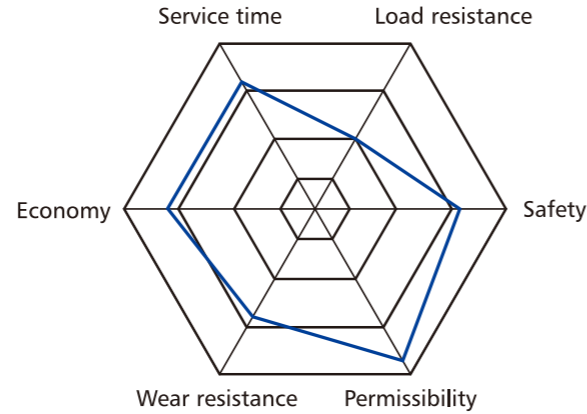


UTQG:420 AA—450 AA



CROSSTOP 4S

M+S



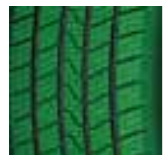
The compound mixture ensures longevity without compromising on safety and performance.



This unique design offers stability in cornering, it has superior performance due to its superior design, where the Royal A/S provided performance as an all-rounder tyre, the Royal A/S provides superior performance in cornering on slippery conditions.



This design has a superior pitch frequency, which offers a considerable reduction in noise, offering a very comfortable and quiet ride.



Superior high tensile steel belts for durability, nylon blend cap to maximize the contact area with the road surface, all of these combined exceeds the goal of having a tyre which not only meets the needs of an exceptional all seasons tyre, but also provides exceptional performance.



OIL



STABILITY



SILENCE



WET



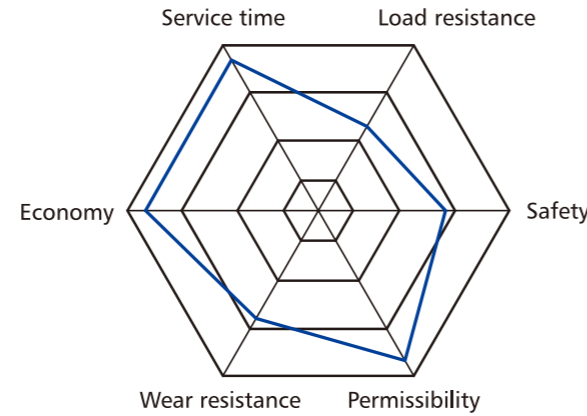
ALL SEASON

Size	PR	Loading Index	Speed Rating	Tread Depth	Inflatable Section Width (mm)	Standard Rim	Overall Diameter (mm)	UTQG	MAX Load Kg	MAX Load lbs	MAX Pressure Kpa	MAX Pressure Psi	Sidewall Description
155/65R13	-	73	T	7.6	157	4.50B	532	420 AA	365	805	300	44	BSW
155/70R13	-	75	T	7.6	157	4.50B	548	420 AA	387	853	300	44	BSW
155/80R13	-	79	T	7.6	157	4.50B	578	420 AB	437	963	300	44	BSW
165/70R13	-	79	T	7.6	170	5.00B	562	420 AA	437	963	300	44	BSW
175/65R13	-	80	T	7.6	177	5.00B	558	420 AA	450	992	300	44	BSW
175/70R13	-	82	T	7.6	177	5.00B	576	420 AA	475	1047	300	44	BSW
155/65R14	-	75	H	7.6	157	4 1/2J	558	420 AA	387	853	300	44	BSW
165/60R14	-	75	H	7.6	170	5J	554	420 AA	387	853	300	44	BSW
165/65R14	-	79	H	7.6	170	5J	570	420 AA	437	963	300	44	BSW
165/70R14	-	81	H	7.6	170	5J	588	420 AA	462	1019	300	44	BSW
175/65R14XL	-	86	T	7.6	177	5J	584	420 AA	530	1168	340	50	BSW
175/70R14XL	-	88	T	7.6	177	5J	602	420 AA	560	1235	340	50	BSW
185/60R14	-	82	H	7.8	189	5 1/2J	578	420 AA	475	1047	300	44	BSW
185/65R14	-	86	H	7.8	189	5 1/2J	596	420 AA	530	1168	300	44	BSW
185/55R14	-	80	H	7.8	194	6J	560	420 AA	450	992	300	44	BSW
185/70R14	-	88	H	7.8	189	5 1/2J	616	420 AA	560	1235	300	44	BSW
175/55R15	-	77	H	7.8	182	5 1/2J	573	420 AA	412	908	300	44	BSW
175/60R15	-	81	H	7.6	177	5J	591	420 AA	462	1019	300	44	BSW
175/65R15	-	84	H	7.8	177	5J	609	420 AA	500	1102	300	44	BSW
185/55R15	-	82	V	7.8	194	6J	585	420 AA	475	1047	300	44	BSW
185/60R15XL	-	88	H	7.8	189	5 1/2J	603	420 AA	560	1235	340	50	BSW
185/65R15XL	-	92	T	7.8	189	5 1/2J	621	420 AA	630	1389	340	50	BSW
195/50R15	-	82	V	7.8	201	6J	577	420 AA	475	1047	300	44	BSW
195/55R15	-	85	V	7.8	201	6J	595	420 AA	515	1135	300	44	BSW
195/60R15	-	88	H	7.8	201	6J	615	420 AA	560	1235	300	44	BSW
195/65R15	-	91	H	7.8	201	6J	635	420 AA	615	1356	300	44	BSW
205/65R15	-	94	V	7.8	209	6J	647	420 AA	670	1477	300	44	BSW
215/65R15	-	96	H	7.8	221	6 1/2J	661	420 AA	710	1565	300	44	BSW
195/45R16 XL	-	84	V	7.8	195	6 1/2J	582	420 AA	500	1102	340	50	BSW
195/50R16 XL	-	88	V	7.8	201	6J	602	420 AA	560	1235	340	50	BSW
195/55R16XL	-	91	V	7.8	201	6J	620	420 AA	615	1356	340	50	BSW
205/45R16 XL	-	87	W	7.8	206	7J	590	420 AA	545	1201	340	50	BSW
205/55R16XL	-	94	V	7.8	214	6 1/2J	632	420 AA	670	1477	340	50	BSW
205/60R16XL	-	96	H	7.8	209	6J	652	420 AA	710	1565	340	50	BSW
215/45R16 XL	-	90	V	7.8	213	7J	600	420 AA	600	1323	340	50	BSW
215/55R16XL	-	97	V	7.8	226	7J	642	420 AA	730	1609	340	50	BSW
215/60R16XL	-	99	H	7.8	221	6 1/2J	664	420 AA	775	1709	340	50	BSW
215/65R16XL	-	102	H	7.8	221	6 1/2J	686	420 AA	850	1874	340	50	BSW
215/70R16	-	100	H	7.8	221	6 1/2J	708	420 AA	800	1764	300	44	BSW
225/55R16 XL	-	99	W	7.8	233	7J	654	420 AA	775	1709	340	50	BSW
205/45R17 XL	-	88	W	7.8	206	7J	616	420 AA	560	1235	340	50	BSW
205/50R17 XL	-	93	W	7.8	214	6 1/2J	638	420 AA	650	1433	340	50	BSW
215/45R17 XL	-	91	W	7.8	213	7J	626	420 AA	615	1356	340	50	BSW
215/50R17 XL	-	95	W	7.8	226	7J	648	420 AA	690	1521	340	50	BSW
215/55R17 XL	-	98	W	7.8	226	7J	668	420 AA	750	1653	340	50	BSW
215/60R17 XL	-	100	V	7.8	221	6 1/2J	690	420 AA	800	1764	340	50	BSW
225/45R17	-	94	W	7.8	225	7 1/2J	634	420 AA	670	1477	340	50	BSW
225/50R17XL	-	98	W	7.8	233	7J	658	420 AA	750	1653	340	50	BSW
225/55R17 XL	-	101	W	7.8	233	7J	680	420 AA	825	1819	340	50	BSW
225/60R17 XL	-	103	V	7.8	228	6 1/2J	702	420 AA	875	1929	340	50	BSW
225/65R17 XL	-	106	V	7.8	228	6 1/2J	724	420 AA	950	2094	340	50	BSW
235/45R17 XL	-	97	W	7.8	236	8J	644	420 AA	730	1609	340	50	BSW
235/55R17 XL	-	103	W	7.8	245	7 1/2J	690	420 AA	875	1929	340	50	BSW
235/65R17 XL	-	108	V	7.8	240	7J	738	420 AA	1000	2205	340	50	BSW
225/40ZR18 XL	-	92	Y	7.8	230	8J	637	420 AA	630	1389	340	50	BSW
225/45R18 XL	-	95	W	7.8	225	7 1/2J	659	420 AA	690	1521	340	50	BSW
225/55R18 XL	-	102	V	7.8	233	7J	705	420 AA	850	1874	340	50	BSW
235/50R18 XL	-	101	W	7.8	245	7 1/2J	693	420 AA	825	1819	340	50	BSW
245/40ZR18 XL	-	97	Y	7.8	248	8 1/2J	653	450AA	730	1609	340	50	BSW
245/45ZR18 XL	-	100	Y	7.8	243	8J	677	420 AA	800	1764	340	50	BSW

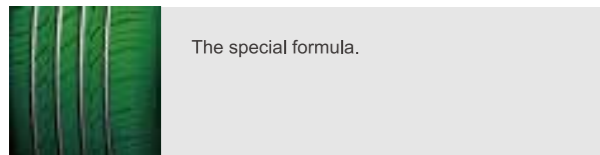
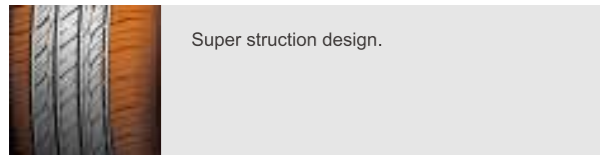
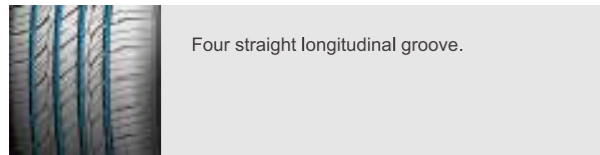


CITIWALKER

M+S



UTQG:420 AA



DRAINAGE



COMFORT



SILENCE



HIGH PERFORMANCE



SUV

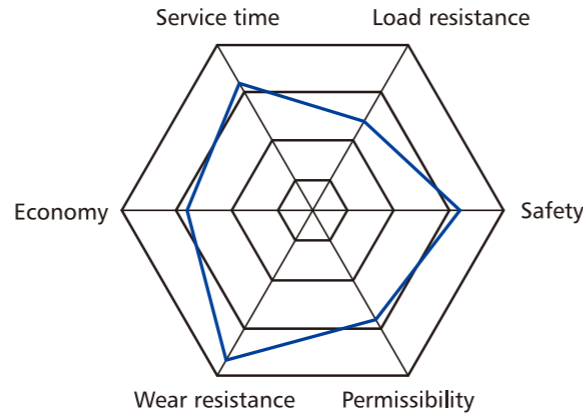
Size	PR	Loading Index	Speed Rating	Tread Depth	Inflatable Section Width (mm)	Standard Rim	Overall Diameter (mm)	UTQG	MAX Load Kg	MAX Load lbs	MAX Pressure Kpa	MAX Pressure Psi	Sidewall Description
215/70R16	-	100	H	8.2	221	6 1/2J	708	420AA	800	1764	300	44	BSW
225/70R16	-	103	H	8.2	228	6 1/2J	722	420AA	875	1929	300	44	BSW
235/70R16	-	106	H	8.2	240	7J	736	420AA	950	2094	300	44	BSW
245/70R16	-	107	H	8.2	248	7J	750	420AA	975	2149	300	44	BSW
255/65R16	-	109	H	8.2	260	7 1/2J	738	420AA	1030	2271	300	44	BSW
255/70R16	-	111	H	8.2	260	7 1/2J	764	420AA	1090	2403	300	44	BSW
265/70R16	-	112	H	8.2	272	8J	778	420AA	1120	2469	300	44	BSW
275/70R16	-	114	H	8.2	279	8J	792	420AA	1180	2601	300	44	BSW
215/60R17	-	96	H	8.2	221	6 1/2J	690	420AA	710	1565	300	44	BSW
215/65R17	-	99	H	8.2	221	6 1/2J	712	420AA	775	1709	300	44	BSW
225/60R17	-	99	H	8.2	228	6 1/2J	702	420AA	775	1709	300	44	BSW
225/65R17	-	102	H	8.2	228	6 1/2J	724	420AA	850	1874	300	44	BSW
235/60R17	-	102	H	8.2	240	7J	714	420AA	850	1874	300	44	BSW
235/65R17	-	104	H	8.2	240	7J	738	420AA	900	1984	300	44	BSW
245/65R17	-	107	H	8.2	248	7J	750	420AA	975	2149	300	44	BSW
255/65R17	-	110	H	8.2	260	7 1/2J	764	420AA	1060	2337	300	44	BSW
265/65R17	-	112	H	8.2	272	8J	776	420AA	1120	2469	300	44	BSW
265/70R17	-	115	H	8.2	272	8J	804	420AA	1215	2679	300	44	BSW
275/65R17	-	115	H	8.2	279	8J	790	420AA	1215	2679	300	44	BSW
285/65R17	-	116	H	8.2	292	8 1/2J	802	420AA	1250	2756	300	44	BSW
245/65R17 XL	-	111	H	8.2	248	7J	750	420AA	1090	2403	340	50	BSW
235/65R18 XL	-	110	H	8.2	240	7J	763	420AA	1060	2337	340	50	BSW
245/60R18	-	105	H	8.2	248	7J	751	420AA	925	2039	300	44	BSW
255/60R18 XL	-	112	H	7.8	260	7 1/2J	763	420AA	1120	2469	340	50	BSW
255/70R18	-	113	H	8.2	260	7 1/2J	815	420AA	1150	2535	300	44	BSW
265/60R18 XL	-	114	H	8.2	272	8J	775	420AA	1180	2601	340	50	BSW
265/70R18	-	116	H	8.2	272	8J	829	420AA	1250	2756	300	44	BSW
275/65R18	-	116	H	8.2	279	8J	815	420AA	1250	2756	300	44	BSW
285/60R18 XL	-	120	H	8.2	292	8 1/2J	799	420AA	1400	3086	340	50	BSW
255/50R20 XL	-	109	V	7.8	265	8J	764	420AA	1030	2271	340	50	BSW
265/50R20 XL	-	111	V	7.8	277	8 1/2J	774	420AA	1090	2403	340	50	BSW
275/55R20 XL	-	117	V	7.8	284	8 1/2J	810	420AA	1285	2833	340	50	BSW
225/55R18	-	98	H	8.2	233	7J	705	420AA	750	1653	300	44	BSW
225/60R18 XL	-	104	H	8.2	228	6 1/2J	727	420AA	900	1984	340	50	BSW
235/55R18 XL	-	104	H	8.2	245	7 1/2J	715	420AA	900	1984	340	50	BSW
285/50R20 XL	-	116	V	7.8	297	9 J	794	420AA	1250	2756	340	50	BSW



UTQG:500 AB

VERSANT A/T

M+S



Four main zigzag grooves and rough lateral blocks provide excellent traction on all kind of road conditions.

The open shoulder grooves prevent aquaplaning with enhanced wet grip performance and provide excellent water evacuation. The white letter styling provide a artistic image.

The block tread design with multiple-sipes provide outstanding off-road traction and reduce tread damage on off-road condition.

Jointless Nylon band and strong structure design provided the strong carcass to enhance the reliability and durability. Special tread compound and wide footprint enhance tread life and deliver excellent braking on wet and dry roads.

- 
STABILITY
- 
BRAKING
- 
DRAINAGE
- 
4 SEASON



Size	PR	Loading Index	Speed Rating	Tread Depth	Inflatable Section Width(mm)	Standard Rim	Overall Diameter (mm)	UTQG	MAX Load Kg	MAX Load lbs	MAX Pressure Kpa	MAX Pressure Psi	Sidewall Description
P205/75R15	-	97	T	8.2	203	5 1/2J	689	500 AB	725	1598	300	44	OWL
P215/75R15	-	100	T	8.2	216	6J	703	500 AB	800	1764	300	44	OWL
P225/75R15	-	102	T	8.2	223	6J	719	500 AB	850	1874	300	44	OWL
P235/75R15 XL	-	109	S	8.7	235	6 1/2J	733	500 AB	1030	2271	340	50	OWL
P265/70R15	-	112	T	9.2	272	8J	753	500 AB	1120	2469	300	44	OWL
P215/70R16	-	100	T	8.2	221	6 1/2J	708	500 AB	800	1764	300	44	BSW
P215/70R16	-	99	T	8.2	221	6 1/2J	708	500 AB	775	1709	300	44	BSW
P225/70R16	-	101	T	8.2	228	6 1/2J	722	500 AB	825	1819	300	44	OWL
P225/70R16	-	103	T	8.2	228	6 1/2J	722	500 AB	875	1929	300	44	OWL
P235/70R16	-	106	T	8.8	240	7J	736	500 AB	950	2094	300	44	OWL
P235/70R16	-	104	T	8.8	240	7J	736	500 AB	900	1984	300	44	OWL
P245/70R16	-	107	T	8.8	248	7J	750	500 AB	975	2149	300	44	OWL
P245/70R16 XL	-	111	S	8.8	248	7J	750	500 AB	1090	2403	340	50	OWL
P245/70R16	-	106	T	8.8	248	7J	750	500 AB	950	2094	300	44	OWL
P255/70R16	-	109	T	9.2	260	7 1/2J	764	500 AB	1030	2271	300	44	OWL
P255/70R16	-	111	T	9.2	260	7 1/2J	764	500 AB	1090	2403	300	44	OWL
P265/70R16	-	112	T	9.2	272	8J	778	500 AB	1120	2469	300	44	OWL
P265/70R16	-	111	T	9.2	272	8J	778	500 AB	1090	2403	300	44	OWL
P275/70R16	-	114	T	9.2	279	8J	792	500 AB	1180	2601	300	44	OWL
P235/65R17	-	104	T	8.8	240	7J	738	500 AB	900	1984	300	44	BSW
P245/65R17	-	107	T	8.8	248	7J	750	500 AB	975	2149	300	44	BSW
P255/65R17	-	110	T	8.7	260	7 1/2J	764	500 AB	1060	2337	300	44	OWL
P265/65R17	-	110	T	8.7	272	8J	776	500 AB	1060	2337	300	44	OWL
P265/65R17	-	112	T	8.7	272	8J	776	500 AB	1120	2469	300	44	OWL
P265/70R17	-	113	T	9.2	272	8J	804	500 AB	1150	2535	300	44	OWL
P265/70R17	-	115	T	9.0	272	8J	804	500 AB	1215	2679	300	44	OWL
P275/65R17	-	115	T	9.2	279	8J	790	500 AB	1215	2679	300	44	OWL
P275/55R20 XL	-	117	T	8.7	284	8 1/2J	810	500 AB	1285	2833	340	50	BSW
P275/60R20 XL	-	119	T	8.7	279	8J	838	500 AB	1360	2998	340	50	BSW
185/75R16C	8PR	104/102	S	8.1	184	5J	684	-	900/850	1985/1875	450	65	BSW
205R16C	8PR	110/108	S	8.2	208	6J	736	-	1060/1000	2335/2205	450	65	BSW
215R15C	8PR	112/110	S	8.7	218	6J	725	-	1120/1060	2470/2337	450	65	BSW
215/70R15C	8PR	109/107	R	8.2	221	6 1/2J	683	-	1030/975	2270/2150	450	65	BSW
245/75R15C	6PR	109/107	S	11.2	248	7J	749	-	1030/975	2270/2150	375	55	BSW
255/70R15C	6PR	112/110	S	8.2	260	7 1/2J	739	-	1120/1060	2470/2335	375	55	BSW
LT235/75R15	6PR	104/101	S	11.2	235	6 1/2J	733	-	900/825	1985/1820	350	50	OWL
31x10.50R15LT	6PR	109	S	11.7	268	8 1/2J	775	-	1030	2270	350	51	OWL
LT215/85R16	10PR	115/112	S	10.9	216	6J	772	-	1215/1120	2680/2470	550	80	OWL
LT225/75R16	10PR	115/112	S	10.9	223	6J	744	-	1215/1120	2680/2470	550	80	OWL
LT225/75R16	12PR	119/116	Q	11.2	223	6J	744	-	1360/1250	3000/2755	650	95	OWL
LT235/85R16	10PR	120/116	S	11.7	235	6 1/2J	806	-	1380/1260	3042/2778	550	80	BSW
LT245/75R16	10PR	120/116	S	11.3	248	7J	774	-	1380/1260	3042/2778	550	80	OWL
LT265/75R16	10PR	123/120	S	11.7	267	7 1/2J	804	-	1550/1400	3415/3085	550	80	OWL
LT285/75R16	8PR	122/119	S	11.6	286	8J	834	-	1500/1360	3305/3000	450	65	OWL
LT245/75R17	10PR	121/118	S	11.2	248	7J	800	-	1450/1320	3195/2910	550	80	OWL
LT265/70R17	10PR	121/118	S	11.7	272	8J	804	-	1450/1320	3195/2910	550	80	OWL
LT275/65R18	10PR	123/120	S	11.2	278	8J	815	-	1550/1400	3415/3085	550	80	BSW
LT275/70R18	10PR	125/122	S	11.2	279	8J	843	-	1650/1500	3640/3305	550	80	BSW



GRINDOR R/T

M+S

R/T

Product features



STAGGERED SHOULDER LUGS:
Provides traction in off-road environments.



Slingstone structure: Protect the bottom of groove from sharp stone.



STEP BLOCK EDGE: Step block edge provide additional biting edges for more traction.



Shoulder and block design: Shoulder grooves are arranged in alternating widths and lengths to clear mud and maintain traction. Irregular block provide more traction on different road condition.



STABILITY



BRAKING



DRAINAGE



4 SEASON

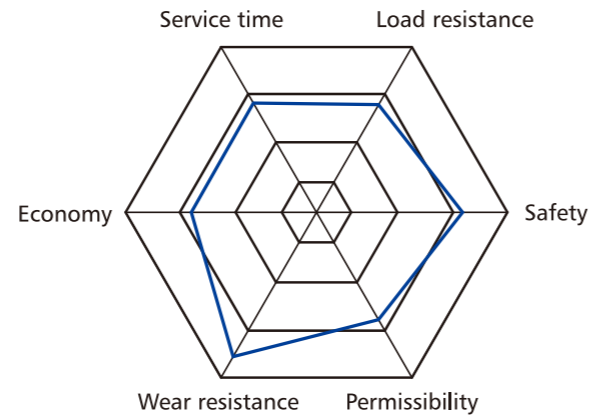


Size	PR	Loading Index	Speed Rating	Tread Depth	Inflatable Section Width(mm)	Standard Rim	Overall Diameter (mm)	UTQG	MAX Load Kg	MAX Load lbs	MAX Pressure Kpa	MAX Pressure Psi	Sidewall Description
33X12.50R20LT	10PR	114	Q	13	318	10J	826	-	1180	2600	448	65	BSW
35X12.50R20LT	10PR	121	Q	13	318	10J	877	-	1450	3195	518	75	BSW
33X12.50R22LT	10PR	109	Q	13	318	10J	832	-	1030	2270	448	65	BSW
35X12.50R22LT	10PR	117	Q	13	318	10J	883	-	1450	3195	552	80	BSW
LT265/65R17	10PR	120/117	S	11	272	8J	775	-	1400	3085	552	80	OWL
LT265/60R18	10PR	120/117	S	11	272	8J	775	-	1361	3000	552	80	OWL



VERSANT M/T

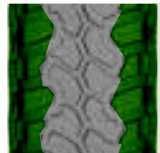
M+S



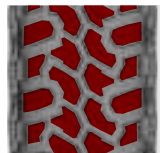
Product features



Three main zigzag grooves and aggressive pattern design provide outstanding traction on all of road conditions.



High void ratio and open shoulder offer excellent resistance to aquaplaning and self-cleaning performance.



The block road design with multiple-sipes provide outstanding off-road condition. Special casing profile and solid shoulder pattern enhance the max traction and conering performance.



Jointless Nylon band and strong structure design provide the strong carcass to enhance the reliability and durability. Special tread compound and wide footprint enhance tread life and deliver excellent braking on wet and dry roads.



STABILITY



BRAKING



DRAINAGE



4 SEASON



M/T

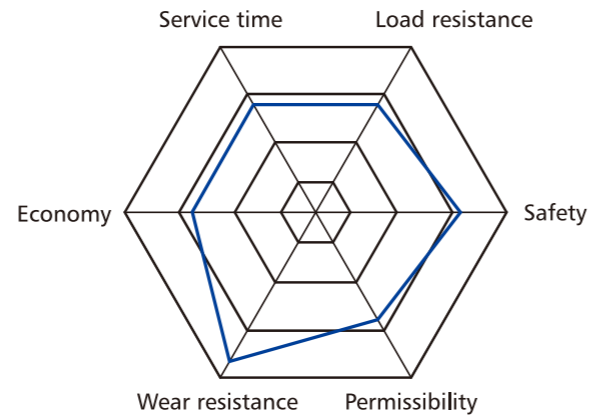
Size	PR	Loading Index	Speed Rating	Tread Depth	Inflatable Section Width(mm)	Standard Rim	Overall Diameter (mm)	UTQG	MAX Load Kg	MAX Load lbs	MAX Pressure Kpa	MAX Pressure Psi	Sidewall Description
31×10.50R15LT	6PR	109	Q	13.2	268	8 1/2J	775	-	1030	2270	350	51	BSW
33×12.50R15LT	6PR	108	Q	13.2	318	10J	826	-	1000	2205	250	35	BSW
35×12.50R15LT	6PR	113	Q	13.2	318	10J	877	-	1150	2535	250	35	BSW
LT235/85R16	10PR	120/116	Q	13.2	235	6 1/2J	806	-	1380/1260	3042/2778	550	80	BSW
LT245/75R16	10PR	120/116	Q	13.2	248	7J	774	-	1380/1260	3042/2778	550	80	BSW
LT265/75R16	10PR	123/120	Q	13.2	267	7 1/2J	804	-	1550/1400	3415/3085	550	80	BSW
LT285/75R16	10PR	126/123	Q	13.2	286	8J	834	-	1700/1550	3750/3415	550	80	BSW
305/70R16LT	10PR	124/121	Q	13.2	311	9J	840	-	1600/1450	3525/3195	450	65	BSW
315/75R16LT	10PR	127/124	Q	13.2	313	8 1/2J	884	-	1750/1600	3860/3525	450	65	BSW
LT265/70R17	10PR	121/118	Q	13.2	272	8J	804	-	1450/1320	3195/2910	550	80	BSW
LT285/70R17	10PR	121/118	Q	13.2	292	8 1/2J	832	-	1450/1320	3195/2910	550	80	BSW
33×12.50R17LT	10PR	120	Q	13.2	318	10J	832	-	1400	3085	450	65	BSW
35×12.5R17LT	10PR	121	Q	13.2	318	10J	877	-	1450	3195	450	65	BSW
37×12.50R17LT	8PR	124	Q	13.2	318	10J	934	-	1600	3525	350	50	BSW
33×12.50R18LT	10PR	118	Q	13.2	318	10J	832	-	1320	2910	450	65	BSW
35×12.50R18LT	10PR	123	Q	13.2	318	10J	883	-	1550	3415	450	65	BSW



VERSANT M/T II

M+S

M/T II



Product features

- Off-Road Maximum Traction Tyre, designed for extreme 4X4 application, confidence in performance on muddy, snowy and rocky terrain as well as sealed road performance, with extra ground clearance, higher load-carrying capacity, and greater ability to go off-road. 4X4 enthusiasts know it for its long wear, low noise and aggressive tread pattern.
- Strategically placed ribs within the lateral grooves of the tread design help to discharge stones and resist stone drilling.
- Specially developed tread compound helps resist the cutting, tearing and chunking commonly developed in extended off-road applications.
- Strategically placed in the lower side wall area, a raised rim protector helps protect the wheel and tyre from hazards in off-road driving conditions.

- STABILITY
- BRAKING
- DRAINAGE
- 4 SEASON

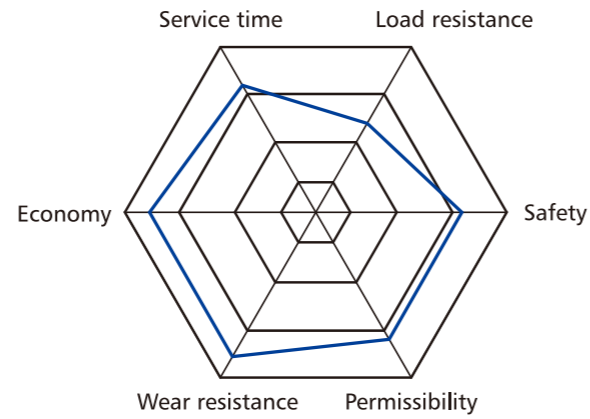


Size	PR	Loading Index	Speed Rating	Tread Depth	Inflatable Section Width(mm)	Standard Rim	Overall Diameter (mm)	UTQG	MAX Load Kg	MAX Load lbs	MAX Pressure Kpa	MAX Pressure Psi	Sidewall Description
33×12.50R20LT	10PR	114	Q	14.2	318	10J	826	-	1180	2600	450	65	BSW
35×12.50R20LT	10PR	121	Q	14.2	318	10J	877	-	1450	3195	450	65	BSW
35×12.50R22LT	10PR	117	Q	14.2	318	10J	877	-	1285	2835	450	65	BSW
37×12.50R22LT	10PR	123	Q	14.2	318	10J	928	-	1550	3415	450	65	BSW



Commax I

M+S



Product features

Reinforced structure and special abrasion resistant tread compound deliver extra puncture resistance and load bearing capability with more mileage.



STABILITY

Three main zigzag grooves combined with lateral blocks provide excellent ride stability and great traction on all kinds of road conditions.



ECONOMY

Continuous tread patterns on shoulder and solid shoulder ribs responsive handling and even wear.



DRAINAGE

White sidewall rib shows extraordinary appearance.



4 SEASON



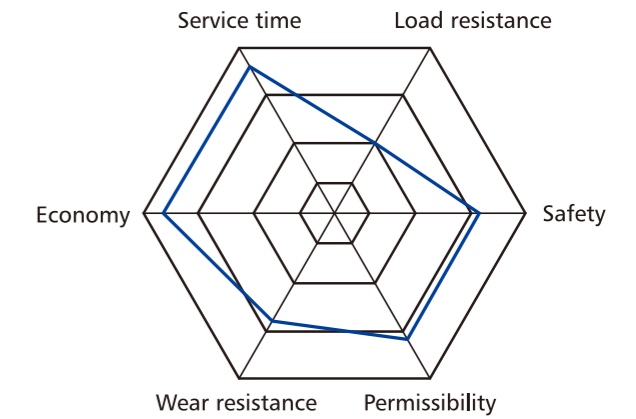
COMMERCIAL

Size	PR	Loading Index	Speed Rating	Tread Depth	Inflatable Section Width(mm)	Standard Rim	Overall Diameter (mm)	UTQG	MAX Load Kg	MAX Load lbs	MAX Pressure Kpa	MAX Pressure Psi	Sidewall Description
155R13C	6PR	85/83	R	7.8	157	4.50B	578	-	515/487	1135/1075	350	50	BSW
165R13C	6PR	91/89	R	7.8	167	4.50B	596	-	615/580	1355/1280	375	55	BSW
165R13C	8PR	94/93	R	7.8	167	4.50B	596	-	670/650	1475/1435	450	65	BSW
185R14C	8PR	102/100	R	8.2	188	5 1/2J	650	-	850/800	1875/1765	450	65	BSW
195R14C	8PR	106/104	R	8.2	198	5 1/2J	666	-	950/900	2095/1985	450	65	WR
205/75R14C	8PR	109/107	R	8.7	203	5 1/2J	664	-	1030/975	2270/2150	475	69	WR
195R15C	8PR	106/104	R	8.2	196	5 1/2J	693	-	950/900	2095/1985	450	65	WR
185R15C	8PR	103/102	R	8.2	188	5 1/2J	674	-	875/850	1930/1875	450	65	WR
205/75R15C	8PR	109/107	R	8.7	203	5 1/2J	689	-	1030/975	2270/2150	475	69	WR



Commax II

M+S



UTQG:420 AB

Four main grooves provide good driving stability and wet performance.



STABILITY

Reasonable pattern area, perfect collocation of every grooves.



ECONOMY

Special tread compound, ensure tire performance stability in all kinds of weather conditions.



SILENCE

White sidewall rib shows extraordinary appearance.



OIL



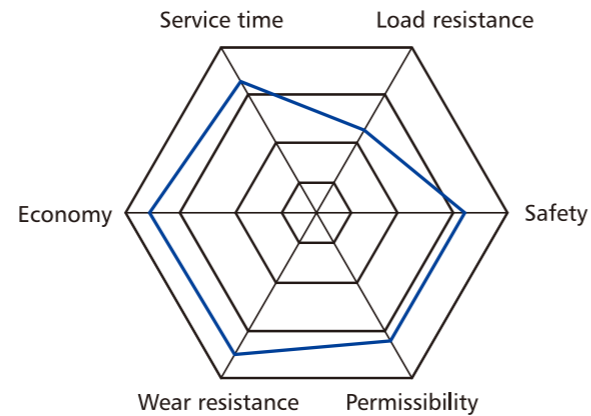
COMMERCIAL

Size	PR	Loading Index	Speed Rating	Tread Depth	Inflatable Section Width (mm)	Standard Rim	Overall Diameter (mm)	UTQG	MAX Load Kg	MAX Load lbs	MAX Pressure Kpa	MAX Pressure Psi	Sidewall Description
P195/75R14	-	92	S	7.8	196	5 1/2J	648	420AB	635	1400	300	44	WR
P205/75R14	-	95	S	7.8	203	5 1/2J	664	420AB	695	1532	300	44	WR
P215/75R15	-	100	T	8.2	216	6J	703	420AB	790	1742	300	44	WR
P235/75R15	-	105	S	8.2	235	6 1/2J	733	420AB	920	2028	300	44	WR
P225/70R15	-	100	T	7.9	228	6 1/2J	697	420AB	795	1753	300	44	WR
P205/75R15	-	97	T	7.9	203	5 1/2J	689	420AB	725	1598	300	44	WR
P225/75R15	-	102	T	7.9	223	6J	719	420AB	850	1874	300	44	WR
P205/70R15	-	95	S	7.8	209	6J	669	420AB	680	1499	300	44	WR

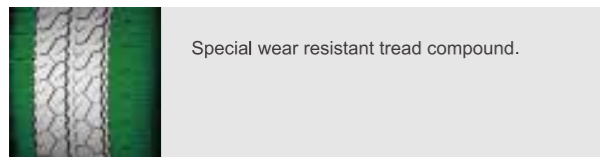
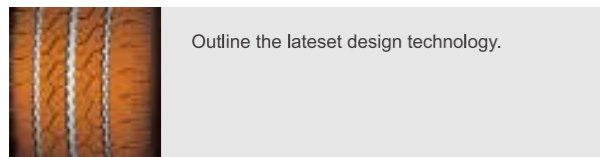
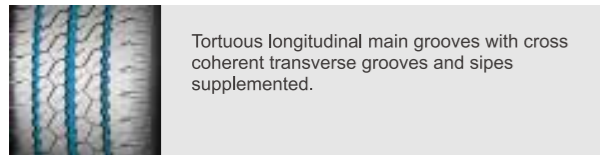
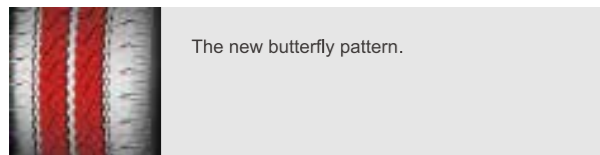


VANMAX

M+S



Product features



- 
STABILITY
- 
ECONOMY
- 
SILENCE
- 
WET



COMMERCIAL

Size	PR	Loading Index	Speed Rating	Tread Depth	Inflatable Section Width (mm)	Standard Rim	Overall Diameter (mm)	UTQG	MAX Load Kg	MAX Load lbs	MAX Pressure Kpa	MAX Pressure Psi	Sidewall Description
145R12C	8PR	86/84	Q	7.8	147	4.00B	542	-	530/500	1170/1100	450	65	BSW
155R12C	8PR	88/86	R	7.8	157	4.50B	550	-	560/530	1235/1170	450	65	BSW
155R13C	8PR	90/88	R	7.8	157	4.50B	578	-	600/560	1325/1235	450	65	BSW
165/70R14C	6PR	89/87	R	7.8	170	5J	588	-	580/545	1280/1200	375	55	BSW
175/65R14C	6PR	90/88	T	8.2	177	5J	584	-	600/560	1325/1235	375	55	BSW
185R14C	8PR	102/100	R	8.2	188	5 1/2J	650	-	850/800	1875/1765	450	65	BSW
195R14C	8PR	106/104	R	8.2	198	5 1/2J	666	-	950/900	2095/1985	450	65	BSW
195R15C	8PR	106/104	R	8.2	196	5 1/2J	693	-	950/900	2095/1985	450	65	BSW
195/70R15C	8PR	104/102	R	8.5	201	6J	655	-	900/850	1985/1875	450	65	BSW
205/70R15C	8PR	106/104	R	8.5	209	6J	669	-	950/900	2095/1985	450	65	BSW
215/65R15C	6PR	104/102	T	8.5	221	6 1/2J	661	-	900/850	1985/1875	375	55	BSW
215/70R15C	8PR	109/107	R	8.5	221	6 1/2J	683	-	1030/975	2270/2150	450	65	BSW
225/70R15C	8PR	112/110	R	8.7	228	6 1/2J	697	-	1120/1060	2470/2335	450	65	BSW
175/75R16C	8PR	101/99	R	7.8	177	5J	668	-	825/775	1820/1710	475	69	BSW
185/75R16C	8PR	104/102	R	8.2	184	5J	684	-	900/850	1985/1875	475	69	BSW
195/65R16C	8PR	104/102	T	8.5	201	6J	660	-	900/850	1985/1875	475	69	BSW
195/75R16C	8PR	107/105	R	8.2	196	5 1/2J	698	-	975/925	2150/2040	475	69	BSW
205/65R16C	8PR	107/105	T	8.5	209	6J	672	-	975/925	2150/2040	475	69	BSW
205/75R16C	8PR	110/108	R	8.5	203	5 1/2J	714	-	1060/1000	2335/2205	475	69	BSW
215/65R16C	8PR	109/107	T	8.5	221	6 1/2J	686	-	1030/975	2270/2150	475	69	BSW
215/70R16C	6PR	108/106	R	8.6	221	6 1/2J	708	-	1000/950	2205/2095	375	55	BSW
215/75R16C	8PR	113/111	R	8.5	216	6J	728	-	1150/1090	2535/2405	475	69	BSW
225/65R16C	8PR	112/110	T	8.7	228	6 1/2J	698	-	1120/1060	2470/2335	475	69	BSW
235/65R16C	8PR	115/113	T	10	240	7J	712	-	1215/1150	2680/2535	475	69	BSW



WinterBlazer HP

M+S



Product features



V-shaped embedded pattern design:

The embedded pattern design has both appearance and practicality, and the sharp-angle pattern block can effectively pierce the water film to enhance the grip.



Optimized horizontal groove design:

The horizontal grooves of alternating thick and thin meet the safety of driving in the changeable snow.



Z-shaped longitudinal groove design

The zigzag-shaped longitudinal grooves help the blocks to stabilize on the snow surface, and can effectively cooperate to ensure the snow passing ability in the forward direction.



Rotation pattern

It satisfies the comfortable driving texture while improving the driving stability, improving the passability of the snow surface, and ensuring driving safety.



DRAINAGE



COMFORT



STABILITY



SNOW&ICE



WINTER

Size	Loading Index	Speed Rating	Tread Depth	Inflatable Section Width(mm)	Standard Rim	Overall Diameter (mm)	MAX Load Kg	MAX Load lbs	MAX Pressure Kpa	MAX Pressure Psi	Sidewall Description
155/80R13	79	T	8.1	157	4 1/2J	578	437	963	300	44	BSW
155/65R13	73	T	8.1	157	4 1/2J	532	365	805	300	44	BSW
155/70R13	75	T	8.1	157	4 1/2J	548	387	853	300	44	BSW
175/70R13	82	T	8.3	177	5J	576	475	1047	300	44	BSW
155/65R14	75	T	8.1	157	4 1/2J	558	387	853	300	44	BSW
165/60R14	75	T	8.1	170	5J	554	387	853	300	44	BSW
165/65R14	79	T	8.1	170	5J	570	437	963	300	44	BSW
165/70R14 XL	85	T	8.1	170	5J	588	515	1135	340	50	BSW
175/65R14	82	T	8.3	177	5J	584	475	1047	300	44	BSW
175/70R14 XL	88	T	8.3	177	5J	602	560	1235	340	50	BSW
185/55R14	80	T	8.3	194	6J	560	450	992	300	44	BSW
185/60R14	82	T	8.3	189	5 1/2J	578	475	1047	300	44	BSW
185/65R14	86	T	8.3	189	5 1/2J	596	530	1168	300	44	BSW
185/70R14 XL	92	T	8.3	189	5 1/2J	616	630	1389	340	50	BSW
195/70R14 XL	95	T	8.3	201	6J	630	690	1521	340	50	BSW
155/60R15	74	T	8.1	157	4 1/2J	567	375	827	300	44	BSW
165/60R15 XL	81	T	8.1	170	5J	579	462	1019	340	50	BSW
165/65R15	81	T	8.1	170	5J	595	462	1019	300	44	BSW
175/55R15	77	T	8.3	182	5 1/2J	573	412	908	300	44	BSW
175/60R15	81	T	8.3	177	5J	591	462	1019	300	44	BSW
175/65R15	84	T	8.3	177	5J	609	500	1102	300	44	BSW
185/55R15	82	H	8.3	194	6J	585	475	1047	300	44	BSW
185/60R15 XL	88	H	8.3	189	5 1/2J	603	560	1235	340	50	BSW
185/65R15	88	H	8.3	189	5 1/2J	621	560	1235	300	44	BSW
195/60R15	88	H	8.3	201	6J	615	560	1235	300	44	BSW
195/65R15 XL	95	T	8.3	201	6 J	635	690	1521	340	50	BSW
205/60R15	91	H	8.5	209	6 J	627	615	1356	300	44	BSW
205/65R15	94	H	8.5	209	6J	647	670	1477	300	44	BSW
205/70R15	96	T	8.5	209	6 J	669	710	1565	300	44	BSW
215/65R15 XL	100	H	8.5	221	6 1/2J	661	800	1764	340	50	BSW
215/70R15	98	T	8.5	221	6 1/2J	683	750	1653	300	44	BSW
195/50R16 XL	88	H	8.3	201	6 J	602	560	1235	340	50	BSW
205/55R16	91	H	8.3	214	6 1/2J	632	615	1356	300	44	BSW
205/60R16 XL	96	H	8.5	209	6J	652	710	1565	340	50	BSW
215/60R16 XL	99	H	8.5	221	6 1/2J	664	775	1709	340	50	BSW
215/65R16	98	H	8.5	221	6 1/2J	686	750	1653	300	44	BSW
215/70R16	100	T	8.5	221	6 1/2J	708	800	1764	300	44	BSW
225/60R16	98	H	8.5	228	6 1/2J	676	750	1653	300	44	BSW
225/65R16	100	H	8.5	228	6 1/2J	698	800	1764	300	44	BSW
225/70R16 XL	107	T	8.5	228	6 1/2J	722	975	2149	340	50	BSW
235/65R16	103	H	8.5	240	7J	712	875	1929	300	44	BSW
235/70R16	106	T	8.5	240	7J	736	950	2094	300	44	BSW
245/70R16 XL	111	T	8.5	248	7J	750	1090	2403	340	50	BSW
215/60R17	96	H	8.5	221	6 1/2J	690	710	1565	300	44	BSW
215/65R17	99	H	8.5	221	6 1/2J	712	775	1709	300	44	BSW
225/60R17	99	H	8.5	228	6 1/2J	702	775	1709	300	44	BSW
225/65R17	102	T	8.5	228	6 1/2J	724	850	1874	300	44	BSW
235/65R17 XL	108	T	8.5	240	7J	738	1000	2205	340	50	BSW
245/65R17 XL	111	T	8.5	248	7J	750	1090	2403	340	50	BSW



WinterBlazer UHP

M+S



Product features



Asymmetric pattern

Match the performance requirements of high-end sports cars. Wide inner gully design enhances drainage effect. The outside of the dense pattern block provides strong handling performance.



Blade cut angular pattern block

Provides higher grip and the ability to break through the water film, deep into the snow surface. 3D wavy steel sheet design provides good grip while increasing tread hardness to meet extreme handling.



Folding groove:

It can effectively improve the fault tolerance rate in all directions, assist in controlling the vehicle attitude, and improve the ultimate controllability.



Silica formula

The special silica formula guarantees the softness on the snow while increasing the strength of the pattern blocks to meet the controllability.



DRAINAGE



STABILITY



HIGH PERFORMANCE



SNOW&ICE



WINTER

Size	Loading Index	Speed Rating	Tread Depth	Inflatable Section Width(mm)	Standard Rim	Overall Diameter (mm)	MAX Load Kg	MAX Load lbs	MAX Pressure Kpa	MAX Pressure Psi	Sidewall Description
195/55R16XL	91	H	8	201	6J	620	615	1356	340	50	BSW
215/45R16XL	90	H	8	213	7J	600	600	1323	340	50	BSW
215/55R16XL	97	H	8	226	7J	642	730	1609	340	50	BSW
265/70R16	112	H	8.3	272	8J	778	1120	2469	300	44	BSW
265/65R17	112	T	8.3	272	8J	776	1120	2469	300	44	BSW
205/50R17XL	93	V	8	214	6 1/2J	638	650	1433	340	50	BSW
205/55R17XL	95	V	8	214	6 1/2 J	658	690	1521	340	50	BSW
215/40R17XL	87	V	8	218	7 1/2 J	604	545	1201	340	50	BSW
215/45R17XL	91	V	8	213	7J	626	615	1356	340	50	BSW
215/50R17XL	95	V	8	226	7J	648	690	1521	340	50	BSW
215/55R17XL	98	V	8	226	7J	668	750	1653	340	50	BSW
225/45R17XL	94	V	8	225	7 1/2J	634	670	1477	340	50	BSW
225/50R17XL	98	V	8	233	7J	658	750	1653	340	50	BSW
225/55R17XL	101	V	8	223	7J	680	825	1819	340	50	BSW
235/55R17XL	103	V	8	245	7 1/2J	690	875	1929	340	50	BSW
245/40R17XL	95	V	8	248	8 1/2 J	628	690	1521	340	50	BSW
245/45R17XL	99	V	8		8J	652	775	1709	340	50	BSW
215/45R18XL	93	V	8	213	7J	651	650	1433	340	50	BSW
215/55R18XL	99	V	8	226	7J	693	775	1709	340	50	BSW
225/40R18XL	92	V	8	230	8J	637	630	1389	340	50	BSW
225/45R18XL	95	V	8	225	7 1/2J	659	690	1521	340	50	BSW
225/55R18	98	V	8	233	7J	705	750	1653	300	44	BSW
235/40R18XL	95	V	8	241	8 1/2 J	645	690	1521	340	50	BSW
235/45R18XL	98	V	8	236	8J	669	750	1653	340	50	BSW
235/50R18XL	101	V	8	245	7 1/2 J	693	825	1819	340	50	BSW
255/40R18XL	99	V	8	260	9J	661	730	1609	340	50	BSW
255/45R18XL	103	V	8	255	8 1/2 J	687	875	1929	340	50	BSW
225/40R19XL	93	V	8	230	8J	663	650	1433	340	50	BSW
255/35R19XL	96	V	8	260	9J	661	710	1565	340	50	BSW
225/55R19XL	103	V	8	233	7J	728	875	1929	340	50	BSW
225/45R19XL	96	V	8	225	7 1/2 J	685	710	1565	340	50	BSW
235/50R19XL	103	V	8	245	7 1/2 J	719	875	1929	340	50	BSW
255/40R19XL	100	V	8	260	9J	687	800	1764	340	50	BSW
255/45R19XL	104	V	8	255	8 1/2 J	715	900	1984	340	50	BSW
245/40R19XL	98	V	8	248	8 1/2 J	679	750	1653	340	50	BSW
275/35R19XL	100	V	8	278	9 1/2J	675	800	1764	340	50	BSW
255/50R20XL	109	V	8	265	8J	764	1030	2271	340	50	BSW
275/55R20XL	117	H	8	284	8 1/2 J	810	1285	2833	340	50	BSW
275/60R20XL	119	H	8.3	279	8J	838	1360	2998	340	50	BSW



WinterBlazer VAN

M+S



Product features



Optimized groove

It is beneficial to improve the stability of driving on ice and improve driving safety.



Shoulder support

The Shoulder continuity pattern block can improve the strength of the tire shoulder, improve the support effect with the ground, and ensure driving safety.



Optimized structure profile

The optimized structure profile is matched with dense and robust pattern blocks to meet the better carrying capacity of the vehicle.



New steel sheet design:

The optimized steel sheet structure can meet the requirement of anti-skid performance and evenly disperse various stresses, so that the tread wear is more uniform and the wear resistance is improved.



DRAINAGE



STABILITY



WET



SNOW&ICE



WINTER

Size	PR	Loading Index	Speed Rating	Tread Depth	Inflatable Section Width(mm)	Standard Rim	Overall Diameter (mm)	MAX Load Kg	MAX Load lbs	MAX Pressure Kpa	MAX Pressure Psi	Sidewall Description
165/70R14C	6PR	89/87	R	8.6	170	5J	588	580/545	1280/1200	375	55	BSW
175/65R14C	6PR	90/88	T	8.6	177	5J	584	600/550	1325/1235	375	55	BSW
175/70R14C	6PR	95/93	T	8.6	177	5J	602	690/650	1521/1435	375	55	BSW
175R14C	8PR	99/98	R	8.6	178	5J	634	775/750	1710/1655	450	65	BSW
185R14C	8PR	102/100	R	8.6	188	5 1/2J	650	850/800	1875/1765	450	65	BSW
195/70R15C	8PR	104/102	R	9	201	6J	655	900/850	1985/1875	450	65	BSW
215/65R15C	6PR	104/102	R	9	221	6 1/2J	661	900/850	1985/1875	375	55	BSW
205/70R15C	6PR	106/104	R	9	209	6J	669	950/900	2095/1985	450	65	BSW
215/70R15C	8PR	109/107	R	9	221	6 1/2J	683	1030/975	2270/2150	450	65	BSW
225/70R15C	8PR	112/110	R	9.3	228	6 1/2J	697	1120/1060	2470/2335	450	65	BSW
175/75R16C	8PR	101/99	R	8.6	177	5J	668	825/775	1820/1710	475	70	BSW
185/75R16C	8PR	104/102	R	9	184	5J	684	900/850	1985/1875	475	70	BSW
195/60R16C	6PR	99/97	T	9	201	6J	640	775/730	1710/1610	375	55	BSW
195/65R16C	8PR	104/102	R	9	201	6J	660	900/850	1985/1875	475	70	BSW
195/75R16C	8PR	107/105	R	9	196	5 1/2J	698	975/925	2150/2040	475	70	BSW
205/65R16C	8PR	107/105	R	9	209	6J	672	975/925	2150/2040	475	70	BSW
205/75R16C	8PR	110/108	R	9	203	5 1/2J	714	1060/1000	2335/2205	475	70	BSW
215/60R16C	6PR	103/101	R	9	221	6 1/2J	664	875/825	1930/1820	375	55	BSW
215/65R16C	8PR	109/107	R	9	221	6 1/2J	686	1030/975	2270/2150	475	70	BSW
215/75R16C	8PR	113/111	R	9.3	216	6J	728	1150/1090	2535/2405	475	70	BSW
225/65R16C	8PR	112/110	R	9.3	228	6 1/2J	698	1120/1060	2470/2335	475	70	BSW
225/75R16C	10PR	121/120	R	9.3	223	6J	744	1450/1400	3195/3085	575	85	BSW
235/65R16C	8PR	115/113	R	9.3	240	7J	712	1215/1150	2679/2535	475	70	BSW



IceMaster

M+S



Product features



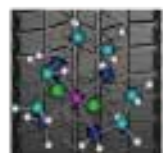
Multi-directional groove distribution design:
It is beneficial to improve the stability of driving in the ice and the safety of driving.



Diamond Angle cutting design
Can effectively pierce through the water film, stabilize on ice and improve the anti-slip effect.



High-density 3D steel sheet design
While ensuring the softness of the grounding surface of the tire, it also increases the strength of the overall pattern block to ensure super grip and reduce the feeling of driving lag.



High-score white carbon black formula design
Improve tire grip in cold environments and ensure tire safety performance at low temperatures.



DRAINAGE



STABILITY



BRAKING



SNOW&ICE



WINTER

Size	Loading Index	Speed Rating	Tread Depth	Inflatable Section Width(mm)	Standard Rim	Overall Diameter (mm)	MAX Load Kg	MAX Load lbs	MAX Pressure Kpa	MAX Pressure Psi	Sidewall Description
165/70R13	79	S	8.5	170	5J	562	437	963	300	44	BSW
175/70R13	82	S	8.3	177	5J	576	475	1047	300	44	BSW
175/65R14	82	S	8.3	177	5J	584	475	1047	300	44	BSW
175/70R14	84	S	8.5	177	5J	602	500	1102	300	44	BSW
185/60R14	82	S	8.3	189	5 1/2J	578	475	1047	300	44	BSW
185/65R14	86	S	8.3	189	5 1/2J	596	530	1168	300	44	BSW
185/70R14	88	S	8.5	189	5 1/2J	616	560	1235	300	44	BSW
185/55R15	82	S	8.3	194	6J	585	475	1047	300	44	BSW
185/60R15	84	S	8.8	189	5 1/2J	603	500	1102	300	44	BSW
185/65R15	88	S	8.3	189	5 1/2J	621	560	1235	300	44	BSW
195/50R15	82	S	8.8	201	6J	577	475	1047	300	44	BSW
195/55R15	85	S	8.8	201	6J	595	515	1135	300	44	BSW
195/60R15	88	S	8.3	201	6J	615	560	1235	300	44	BSW
195/65R15	91	S	8.8	201	6J	635	615	1356	300	44	BSW
205/60R15	91	S	8.5	209	6J	627	615	1356	300	44	BSW
205/65R15	94	S	8.5	209	6J	647	670	1477	300	44	BSW
205/70R15	96	S	8.5	209	6J	669	710	1565	300	44	BSW
185/55R16	83	S	8.8	194	6J	610	487	1074	300	44	BSW
195/55R16	87	S	8.8	201	6J	620	545	1201	300	44	BSW
205/55R16	91	S	8.3	214	6 1/2J	632	615	1356	300	44	BSW
225/55R16	95	S	8.8	233	7J	654	690	1521	300	44	BSW
195/60R16	89	S	8.8	201	6J	640	580	1279	300	44	BSW
205/60R16	92	S	9.1	209	6J	652	630	1389	300	44	BSW
215/55R16	93	S	8.8	226	7J	642	650	1433	300	44	BSW
215/60R16	95	S	9.1	221	6 1/2J	664	690	1521	300	44	BSW
215/65R16	98	S	8.5	221	6 1/2J	686	750	1653	300	44	BSW
215/70R16	100	S	8.5	221	6 1/2J	708	800	1764	300	44	BSW
225/70R16 XL	107	S	8.5	228	6 1/2J	722	975	2149	340	50	BSW
235/70R16	106	S	8.5	240	7J	736	950	2094	300	44	BSW
215/45R17	91	S	8.8	213	7J	626	545	1201	300	44	BSW
215/50R17	95	S	8.8	226	7J	648	615	1356	300	44	BSW
215/60R17	96	S	8.5	221	6 1/2J	690	710	1565	300	44	BSW
225/45R17	94	S	8.8	225	7 1/2J	634	615	1356	300	44	BSW
225/50R17	94	S	8.8	233	7J	658	670	1477	300	44	BSW
215/55R17	98	S	8.8	226	7J	668	670	1477	300	44	BSW
225/55R17	97	S	8.8	233	7J	680	730	1609	300	44	BSW
235/55R17	99	S	8.8	245	7 1/2J	690	775	1709	300	44	BSW
225/60R17	99	S	8.5	228	6 1/2J	702	775	1709	300	44	BSW
225/65R17	102	S	8.5	228	6 1/2J	724	850	1874	300	44	BSW
235/65R17 XL	108	S	8.5	240	7J	738	900	1984	340	50	BSW
245/45R17	95	S	8.8	243	8J	652	690	1521	300	44	BSW
265/65R17	112	S	9.5	272	8J	776	1120	2469	300	44	BSW
285/65R17	116	S	9.5	292	8 1/2J	802	1250	2756	300	44	BSW
185/75R16C	104/102	R	10	184	5J	684	1800	3968	475	70	BSW
195/75R16C	107/105	Q	10	196	5 1/2J	698	1950	4299	475	70	BSW